



94 JACKSON ROAD, SUITE 110, DEVENS, MA 01434 USA

Power Combiner/Divider

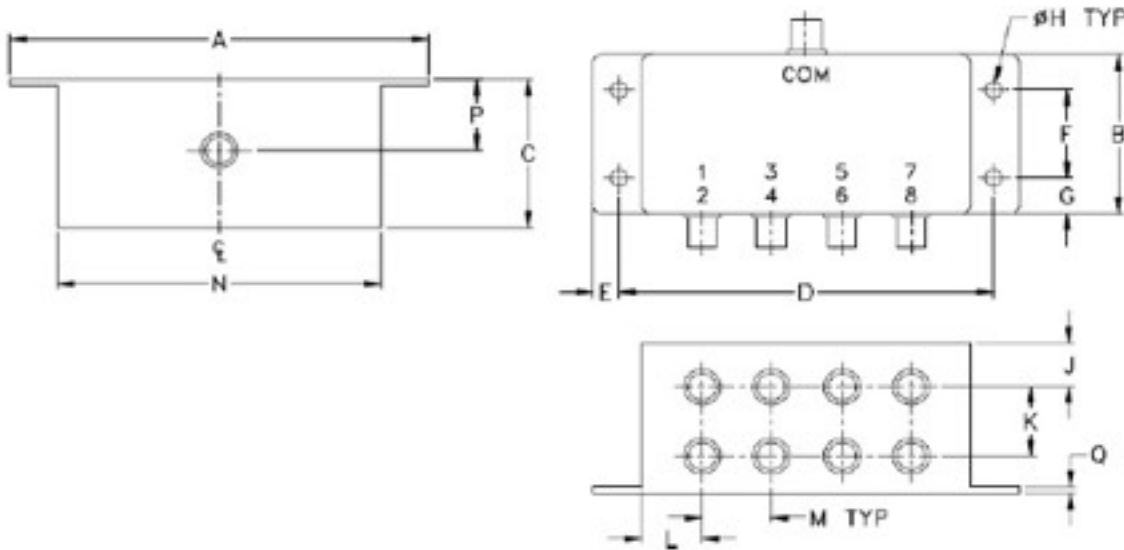
Model RMPD8.05-175Sf

8-Way, 0° SMA female

Frequency (MHz)	Insertion Loss (dB max)	Isolation (dB min)	VSWR (typ/max)	Phase Balance (° max)	Amplitude Balance (dB max)
0.5 - 175	1.6	18	1.20/1.50	5	0.3

Notes:

- Input and output impedance: 50 Ohms
- Connector: SMA female 9 places
- Power: Forward 50 W Reverse: 1W
- Case material: Aluminum alloy with iridite finish
- Operation temperature: -55C to +85C deg



Outline Dimensions (inch mm)

A	B	C	D	E	F	G	H
4.06	1.60	1.50	3.56	.24	.88	.36	.160
103.12	40.64	38.10	90.42	6.10	22.35	9.14	4.06
J	K	L	M	N	P	Q	wt.
.40	.69	.58	.66	3.13	.80	.06	grams
10.16	17.53	14.73	16.76	79.50	20.32	1.52	200

All specifications are subject to change without notice.

Telephone: 978-772-3767

Fax: 978-772-3768

www.responsemicrowave.com