



94 JACKSON ROAD, SUITE 110, DEVENS, MA 01434

Electromechanical Phase Shifter

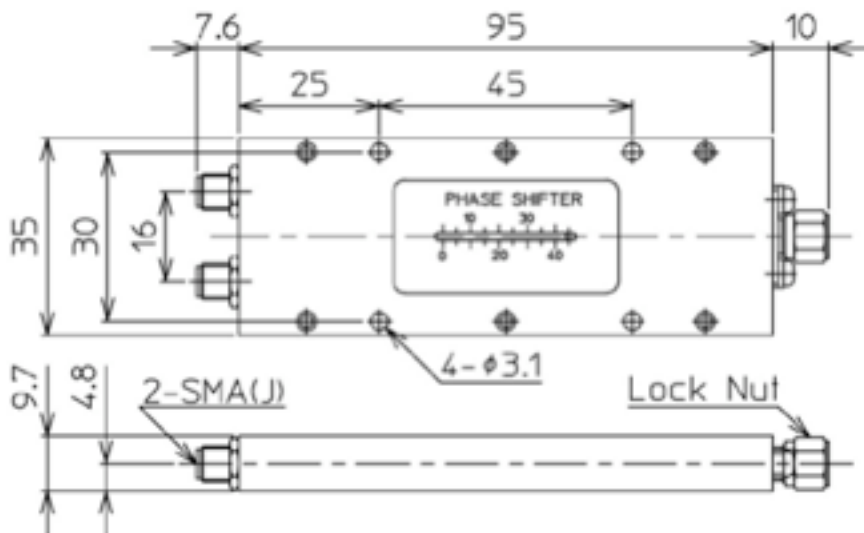
Model RMPS.20000Sf

SMA female

Frequency Range (MHz)	Insertion Loss (dB max)	Impedance	VSWR (max)	Phase Variation (deg/GHz)
DC-20000	0.25	50 Ω	$\leq 1.15:1$	53

Notes:

- a. Connector: SMA female
- b. Operation temperature: -40C to +105C deg
- c. Case material: aluminum w/golden iridite



All specifications are subject to change without notice.

Dimensions: mm

Telephone: 978-772-3767

Fax: 978-772-3768

www.responsemicrowave.com

Rev04/03/12